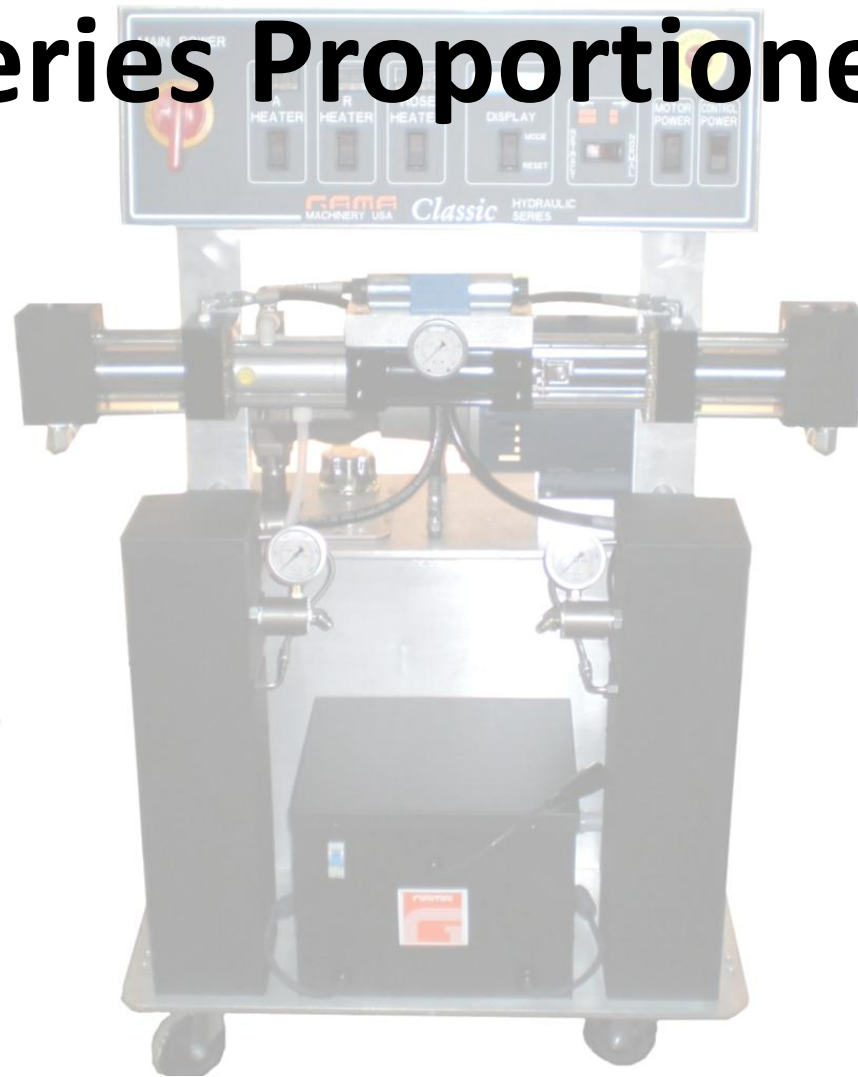


# *Classic*

## **GH- Series Proportioners**



**POLYURETHANE  
MACHINERY  
CORPORATION**

**"BACK TO BASICS"**



**Polyurethane Machinery Corp (PMC)  
NEWEST HYDRAULIC  
PROPORTIONING  
SYSTEM DESIGNED  
WITH THE CUSTOMER  
IN MIND**

**Series  
GH-25 2000  
GH-25 3000  
GH-40 2000  
GH-40 3500**



**POLYURETHANE  
MACHINERY  
CORPORATION**

**"BACK TO BASICS"**

# GH-25/40 Series

PMC upholds a policy of designing equipment with the “CUSTOMER” in mind. So when we asked our Value Added Resellers and experienced Contractors: “What do you want from your Urethane Plural Component equipment?” The resounding response was go “**BACK TO BASICS**”.

PMC is proud to introduce our “*Classic*” Series of foam and coatings Proportioners, built in the USA by the Paragons in the industry offering the customer features in a proportioner that incorporates the highest industry standards for plural component proportioning.



**POLYURETHANE  
MACHINERY  
CORPORATION**

**"BACK TO BASICS"**

# GH-25/40 Series

- Proven Relay Logic Controls
- Passive High Capacity Hydraulic System
- Easy Hose Heat Tap Setting
- Easy Maintenance Open Frame Design
- **New** Design Proportioning Pump Base for Smoother Reversing Action
- **New** Design Heated Hose



POLYURETHANE  
MACHINERY  
CORPORATION

**"BACK TO BASICS"**

# GH-25/40 Series

MODEL	<b>GH-25-2000</b>	<b>GH-25-3000</b>	<b>GH-40-2000</b>	<b>GH-40-3500</b>
OUTPUT	25 lbs/min	1.3 gal/min	40 lbs/min	2.5 gal/min
MAXIMUM WORKING PRESSURE	2,000 psi	3,000 psi	2,000 psi	3,500 psi
MAXIMUM HOSE LENGTH	310 ft	310 ft	410 ft	410 ft
HEATER CAPACITY	10 Kw (12 Kw optional)	10 Kw (12 Kw optional)	15 Kw (18 Kw optional)	15 Kw (18 Kw optional)
HOSE HEATING POWER	90 Volts	90 volts	120 volts	120 volts
WEIGHT	420 lbs / 590 lbs	420 lbs / 590 lbs	420 lbs / 590 lbs	420 lbs / 590 lbs
ELECTRICAL@10Kw HEATERS	35 amps@ 3 x 230V 70 amps @ 1 x 230V	35 amps@ 3 x 230V 70 amps @ 1 x 230V		
ELECTRICAL@12Kw HEATERS	43 amps@ 3 x 230V 80 amps @ 1 x 230V	43 amps@ 3 x 230V 80 amps @ 1 x 230V		
ELECTRICAL@15Kw HEATERS			80 amps @ 3 x 230V 130 amps@ 1 x 230V	80 amps @ 3 x 230V 130 amps@ 1 x 230V
ELECTRICAL@18Kw HEATERS			93 amps@ 3 x 230V	93 amps@ 3 x 230V



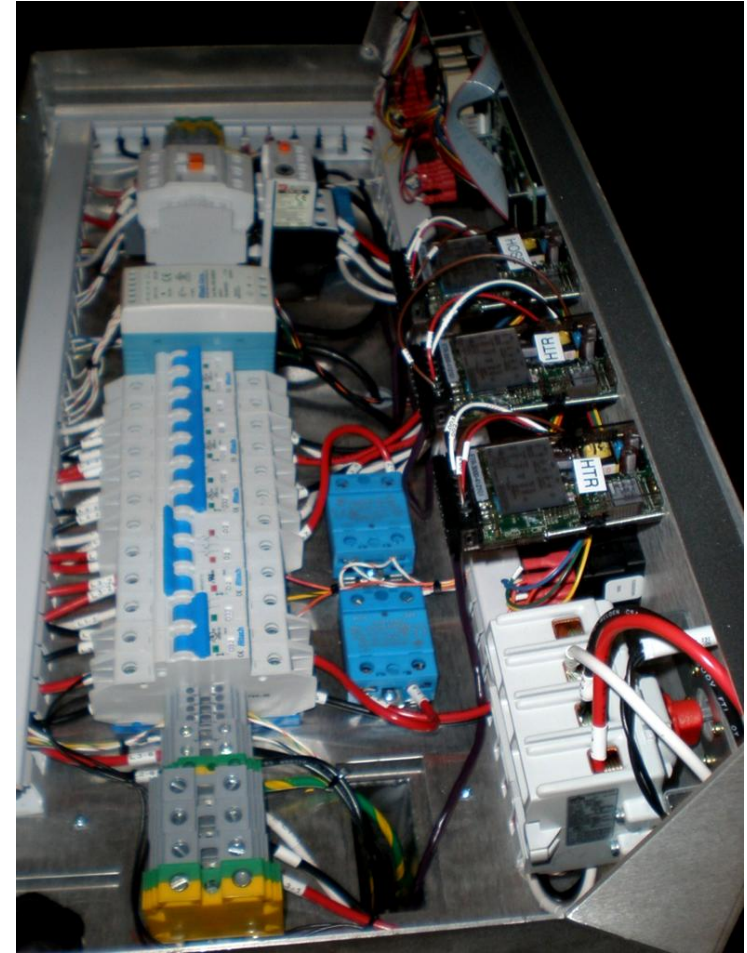
**POLYURETHANE  
MACHINERY  
CORPORATION**

**"BACK TO BASICS"**

# Relay Logic Control

## Proven Relay Logic Control

- No Circuit Board Failure in Harsh Application Environment
- Operator Point-to-Point Troubleshooting



**POLYURETHANE  
MACHINERY  
CORPORATION**

**"BACK TO BASICS"**

# Passive Hydraulic System

## Large Capacity Reservoir

- Prevents Exceeding Hydraulic Oil Service Temperature
  - ✓ Protection of Hydraulic System Components
- Elimination of Cooling Fan and Radiator
  - ✓ Minimizes Maintenance and Hydraulic Component Failure



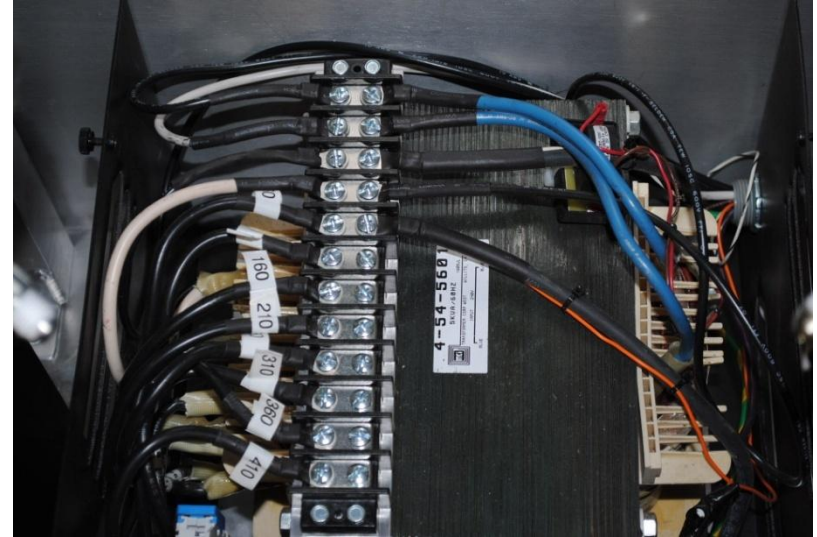
**POLYURETHANE  
MACHINERY  
CORPORATION**

**"BACK TO BASICS"**

# Hose Heat Tap Setting

## Easily Accessible Tap Setting

- Elimination of Electronic Component Failure



**POLYURETHANE  
MACHINERY  
CORPORATION**

**"BACK TO BASICS"**

# Open Frame Design

## Easily Access

- Proportioning Pump Line
- Hydraulic Cylinder
- Electrical Components

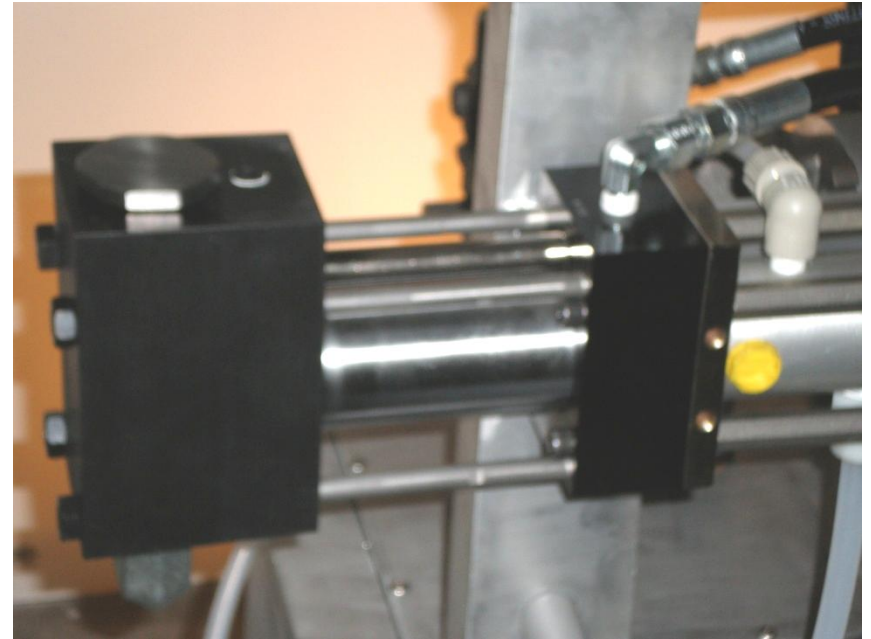


**POLYURETHANE  
MACHINERY  
CORPORATION**

**"BACK TO BASICS"**

# New Pump Base Design

Minimal Pressure Change  
on Pump Reversal



**POLYURETHANE  
MACHINERY  
CORPORATION**

**"BACK TO BASICS"**

# New Design Heated Hose Assemblies

## Continuous Braided Metal Jacket

- Higher Resistance, Faster Heat-up
  - Less Chance of Breakage over Single Ribbon Heated Hoses
  - Multistep Process Protects Wire Braiding and Minimize Moisture Vapor Penetration



Made in the USA



**POLYURETHANE  
MACHINERY  
CORPORATION**

**"BACK TO BASICS"**

# Innovative TSU Design

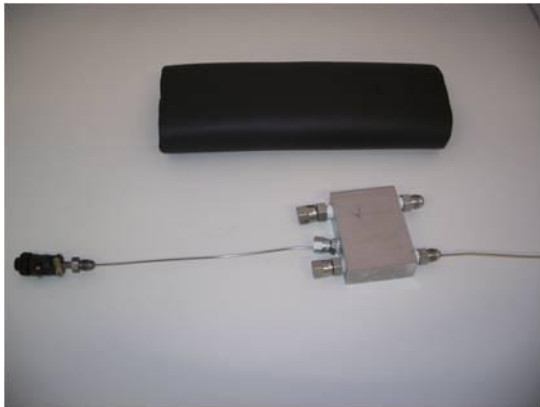
## Universal Design

- Fits all Heated Hose Assemblies

## Replaceable Sensing Element

- Eliminates need to disconnect Material Hoses for Replacement

## Design protects Sensor Plug in Hose Bundle



**POLYURETHANE  
MACHINERY  
CORPORATION**

**"BACK TO BASICS"**

# Our Mission



## Mission Statement

PMC is in business to create and maintain satisfied, loyal and repetitive customers for our plural-component dispensing equipment. This is accomplished by adding value to our products and services through target engineering, on time deliveries and excellent field performance. The successful achievement of this goal will produce a winning combination for PMC and our customers.

## About Polyurethane Machinery Corp (PMC)

Polyurethane Machinery Corp (PMC), a subsidiary of (PMC), is a recent start-up managed by individuals with over 100 years of combined experience in the urethane industry. Polyurethane Machinery Corp (PMC) manufactures equipment and accessories in the USA for use in the urethane industry.

PMC's goal is to be a quality organization that does a quality job in every respect. This means that we will be proud of our work and our products for years to come. All of our energies are directed toward satisfying our customers---our mind set dictates that doing it right is the only way. A mindset which will separate PMC from the competition.

Polyurethane Machinery Corp (PMC), Inc. is proud to introduce our new line of high quality, "Designed with the Customer in Mind" spray and pour equipment for polyurethane foam, polyurea, and in-house, OEM pour foam and injection PU molding, all **made in the USA**. PMC's new line of spray guns and hydraulic proportioners fill the market's void for custom high performance foam and coatings dispensing equipment.

Polyurethane Machinery Corp (PMC) also is proud to announce the flagship GH-25/40 Hydraulic Proportioners for spray or pour foam and coatings. This machine is positioned to replace the industry-renowned Gusmer/Graco H-20/35. It boasts several performance enhancements and very competitive pricing. Coupled with the all-new Vortex Air Purge Spray Gun and the uniquely designed and in-house-manufactured heated hose, the PMC package is poised to become the new industry standard and the hydraulic machine of choice.



**"BACK TO BASICS"**